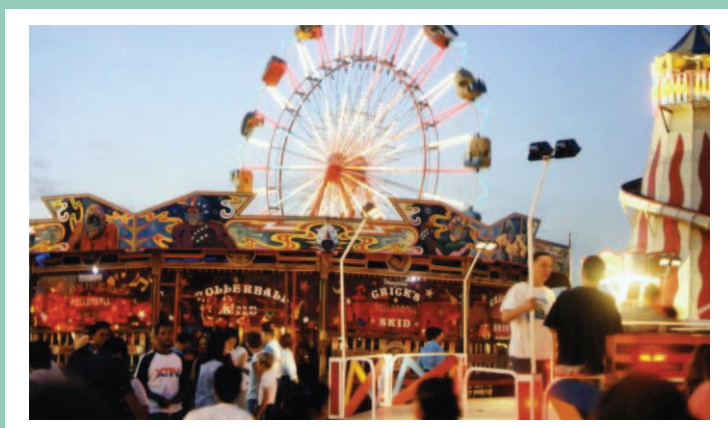
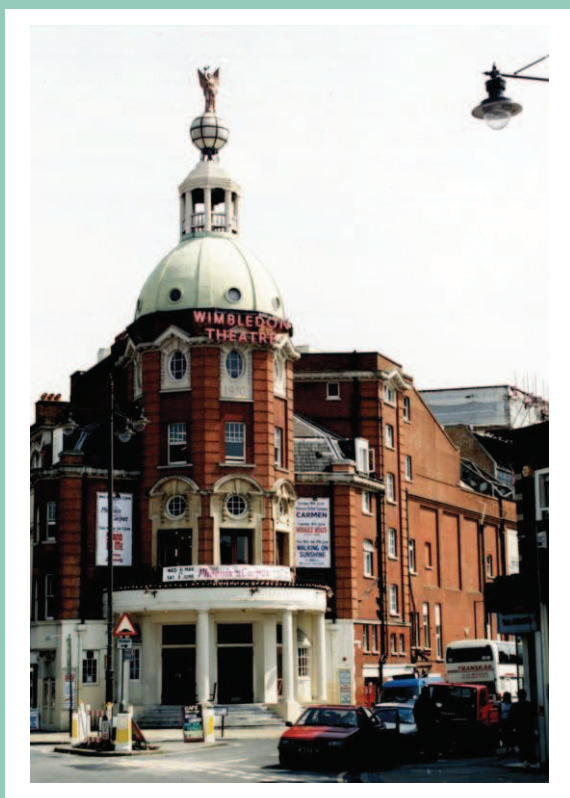


# Merton Heritage Strategy

## 2015 – 2020



## Contents

1. Introduction	Page 2
2. The Merton Context	Page 3
3. Merton Heritage: An Overview	Page 4
4. Current Provision	Page 5
5. Success Stories	Page 7
6. Issues affecting Merton's heritage	Page 8
7. Objectives: 2015 – 20	Page 10
8. Work Plan	Page 11

## 1. Introduction

Heritage defines who we are, gives us a sense of belonging and an understanding of our place in the world. It encompasses everything from architecture and cultural traditions, to religious beliefs, the arts, sport and industry. This complex blend not only influences our development as individuals but also shapes our environment and the society in which we live.

Heritage is constantly changing and evolving. We have a duty to preserve our heritage and to learn from the past, whilst balancing the needs of present and future generations. In doing so, we must consider public need, economic necessity, historical, cultural and artistic integrity, in addition to the happiness and wellbeing of Merton residents. No single factor is necessarily more important than any other when planning and promoting our heritage.

Merton's heritage is valuable not only for the story it tells but also for the contribution it makes to the quality of life and economic prosperity of local residents and businesses. Prior to 2010 information on the range of local heritage activity in Merton was limited with minimal collaboration. The first Merton Heritage Strategy was compiled to address these issues. There was a clear need to assess local service provision, challenges and key objectives for development.



The Merton Heritage Strategy 2015 – 20 gives a more accurate picture of current heritage activity and establishes a more collaborative framework between the Council and the community. Strategic objectives focus on the need to increase participation and public engagement with local heritage. The associated action plan will be community-led and has been compiled following consultation with heritage providers and external stakeholders, with responsibility for delivery shared between council services, heritage partners and the wider community.

The current economic climate poses a particular threat to heritage providers. Growing pressures on budgets make it difficult for the local authority to deliver its existing heritage provision, or provide ongoing financial support to community-based services. Heritage providers across Merton face the same challenges of how to promote the services available, keep abreast of modern technology, improve standards and market themselves

effectively with limited resources. The Merton Heritage Strategy offers an important means for responding to these challenges, setting a framework for partnership work, resource sharing and investment that will be vital to safeguarding local heritage for future generations.

Note:

In the context of this document, the term “heritage” will refer to archaeological remains, historic buildings and structures, cultural artefacts and local history collections including documents, photographic and oral history material within the London Borough of Merton.

## 2. The Merton Context

Merton has a rich and varied history, with many heritage providers and visitor attractions. Merton has 3 scheduled ancient monuments and 20 archaeological priority zones; 4 historic parks and gardens; 315 statutory listed buildings; 28 conservation areas, plus over 3,000 locally listed buildings and structures of local interest.



The Merton Heritage and Design Working Group was convened in 2010 as part of the first Heritage Strategy to discuss matters relating to local heritage and the built environment (including funding initiatives, buildings at risk, partnership opportunities and heritage projects). The group consists of Councillors, Council officers, representatives from museums, heritage attractions, local history societies and community / advocacy groups in the borough. In order to increase the diversity of the group and to incorporate wider participation from the voluntary and business community the groups focus in the future will be on achieving the outcomes of this Strategy and will use different platforms to discuss its work.

Heritage needs to have a higher profile in strategic planning to drive forward service provision and create greater impetus for future investment and expansion. This includes linking heritage initiatives and service provision more effectively to tourism, local and national policies. Heritage has a role to play in fulfilling the objectives of documents such as the National Planning Policy Framework 2012, the Merton Sites and Policies Plan 2014, the Merton Business Plan 2015-19 and the Merton Community Plan 2013. Amongst the key themes for development are improving access to education and jobs, conserving and enhancing the historic environment; community cohesion and promoting cultural / heritage activities.

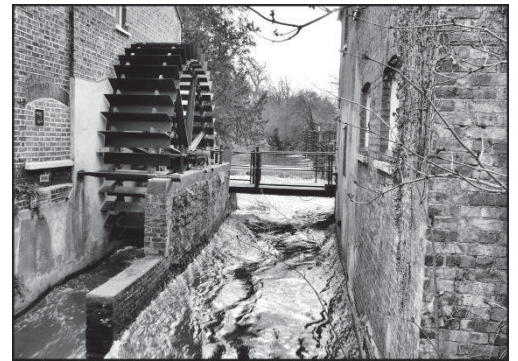
The local authority has limited resources with which to support heritage providers. There is a need to prioritise key tasks and initiatives in order to balance capacity against public expectation. External funding, sponsorship, multi-agency partnerships and resource-sharing are vital if Merton’s heritage is to be given greater prominence and safeguarded for future generations.

### 3. Merton Heritage: An Overview

The heritage of Merton can be traced back over 10,000 years, including evidence of Neolithic hunter-gatherers, Iron Age defences and surviving sections of the Roman road, Stane Street.

Before the dissolution of the monasteries, Merton Priory was one of the most powerful religious institutions in the south. The martyred archbishop, Thomas Becket, was educated there and during the reign of Henry III, the Priory hosted the signing of one of the earliest statutes on which English law is based. The remains of the Priory chapter house are preserved under Merantun Way and are the focus of a Heritage Lottery funded initiative to interpret and reveal their historic significance.

The pure waters of the River Wandle were once prized by the British textile printing industry and led famous exponents, William Morris and Arthur Liberty, to establish thriving craft works in the Colliers Wood area. Merton's numerous watermills also produced diverse goods from flour and snuff, to leather, copper products and dyestuffs.



Merton has strong links to the development of British horticulture from the cultivation of Mitcham lavender and watercress, to the pioneering work of the John Innes Horticultural Institution and Carter's Tested Seeds. At one time the borough held the world's largest toy factory - Lines Brothers at Merton Abbey. It is also associated with major landmarks in transport history including the world's first public railway – the Surrey Iron Railway, authorised in 1803 and the successful Croydon Tramlink, opened in 2000.

Merton has a number of sporting accolades. Wimbledon Football Club is the only team in modern times to have enjoyed F.A. Cup glory at both amateur and professional level. Mitcham has one of the oldest surviving cricket grounds and the borough continues to host the world-famous Wimbledon Lawn Tennis Championship.

Merton has been home to many famous names, from naval hero Lord Nelson, to anti-slavery campaigner William Wilberforce; suffragette Rose Lamartine Yates and the eminent engineer Joseph Bazalgette. The borough has also fostered a host of creative talent including the poet, John Donne, comedian Paul Merton, author Edna O'Brien; actor, George Cole and pioneering silent filmmakers, George Cricks, Henry Sharp and John Martin.



The London Borough of Merton was formed in 1965 from the former boroughs of Mitcham, Wimbledon and the Urban District of Merton & Morden. The nature of Merton as a unified authority is reflected in the borough coat of arms, which features emblems linked to the heritage of its predecessor authorities. These include lavender sprigs associated with the famous Mitcham crop; a fret taken from the crest of Merton Priory; the black lion emblem used by the Garth family, lords of the manor of Morden and the Cornish

chough, once the heraldic symbol of Thomas Cromwell, who was awarded the manor of Wimbledon by Henry VIII.

As a London Borough, Merton has a significant range of historic parks, gardens and common land. It also boasts many sites and buildings of architectural interest.

In the modern era growth and expansion has focussed around the borough's five town centres. These each have their own character and historic associations:

**Colliers Wood:** This area once lay at the heart of Merton's industrial heritage, from calico bleaching and paper production, to precision engineering, paint and varnish manufacture.

**Morden:** The site of the vast St. Helier estate, one of the first major housing developments designed as a garden suburb using Sir Ebenezer Howard's "garden city" principles

**Mitcham:** Boasts Mitcham Status Fair - one of the oldest surviving fairs in the country, this is said to date from the reign of Elizabeth I.

**Raynes Park:** Holds the largest proportion of green space in south west London, including Cannon Hill Common which has Grade 1 listing for nature conservation.

**Wimbledon:** Linked to famous names from social reformer Josephine Butler and astronomer Norman Lockyer, to writer Robert Graves and actress Margaret Rutherford.



#### 4. Current Provision

Merton can boast many heritage attractions, services and organisations dedicated to preserving and raising awareness of the borough's colourful past. Service provision is divided between the local authority and an impressive list of heritage organisations and community groups.

The local authority plays a key part in safeguarding and raising awareness of the rich heritage of Merton. Roles and responsibilities can be divided into three areas:

- a) protection of the built and natural environment including policy development;
- b) collecting and recording material associated with Merton's past and provision of a skilled information service;
- c) promoting and increasing access to Merton's diverse cultural heritage through exhibitions, publications, the arts and education.

The local authority is responsible for preserving the historic character of the borough by ensuring that development of historic buildings or areas is sympathetic and makes a positive contribution to the borough's historic environment. This work is guided by the borough's Core Planning Strategy and the National Planning Policy Framework 2012 (NPPF), which sets out government's policy on planning matters in England and Wales and highlights the need to understand the significance of the borough's built heritage.

The Council recognises its responsibilities as the owner of land and historic buildings within Merton and will ensure the appropriate use of resources and skills, when maintaining the

borough's heritage. The local authority has an important role in the management of conservation areas, the care and public awareness of statutory / locally listed buildings, historic parks and open spaces (the latter are maintained in accordance with the Merton Open Space Strategy, 2012.)

Part of this work includes liaison with Historic England and the Royal Commission for Ancient & Historical Monuments and responsibility for monitoring 3 ancient monuments within the borough (Caesar's Camp on Wimbledon Common; the medieval remains of Merton Priory; the ancient mound in Morden Park.)



Council services have a role in preserving and interpreting historic material (objects, illustrations and documents) for the benefit of future generations.

This includes responsibility for the care and expansion of existing collections, the creation of educational resources and a local history enquiry service.

Merton Council has a responsibility for cultural heritage both practically and in an advisory capacity. By hosting exhibitions and events the authority promotes cultural diversity and extends public access both to the arts and social history. The Council also has a role in the development of new artistic work and initiatives increasing public engagement with heritage. This involves advising community groups and individuals on funding sources and supporting them through bidding processes.

Merton's heritage provision is further represented by a number of passionate individuals and organisations that work tirelessly to promote, research, champion, inspire and support the borough's heritage in both formal and informal ways.

There are 4 registered museums in the borough:

- All England Lawn Tennis Museum
- Wandle Industrial Museum
- Wimbledon Society Museum of Local History
- Wimbledon Windmill



Along with 3 historic sites:

- Southside House, Grade II\* visitor attraction
- National Trust, Morden Hall / Watermeads
- Merton Abbey Mills

Local history societies, Heritage Trusts and organisations with heritage responsibilities / advocacy roles in the borough include:

- John Innes Society
- Merton Historical Society
- Merton Priory Trust
- Mitcham Cricket Green Community & Heritage
- Mitcham Society
- Wandle Heritage Ltd



- Wimbledon Society
- Wimbledon & Putney Common Conservators
- Mitcham Common Conservators

There are also a number of Friends Groups that make a significant contribution to our shared heritage.

Faith organisations also contribute collectively to our shared heritage. Local examples include:

- Al-Ahmadiyya mosque
- Durnsford Road mosque
- Bhuddapadipa Thai Temple
- Shree Ganapathy Hindu Temple
- Wimbledon Synagogue
- Anglican Churches: notably the parish churches ( St. Lawrence's, Morden; St. Mary's, Wimbledon; St. Mary the Virgin, Merton and St. Peter & St. Paul's, Mitcham. ) These have a rich and varied history, in addition to architectural status as listed buildings.
- Roman Catholic Churches: notably S.S.Peter & Paul, Mitcham; Sacred Heart, Wimbledon

## 5. Success stories

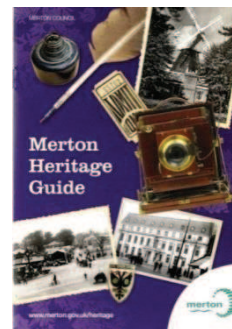
There have been a number of positive outcomes with regard to the objectives set in the first Merton Heritage Strategy. These demonstrate the value of having a framework document and are testament to the hard work of local heritage organisations, the voluntary sector and the local authority working together. Achievements include:

### 5.1 Raising Merton's profile:

A "Merton Heritage Guide", maps and trails were published, helping to promote the borough's heritage attractions and stakeholder organisations. A draft Borough Character Study, comprehensive Historic Environment Record and a "Merton Memories" online photographic archive were produced, raising public awareness of historic associations, sites and structures across Merton.

Widespread participation and partnership work during major public events such as Heritage Discovery Days increased public engagement with local heritage.

The compiling of conservation appraisals, design guides and management plans ensured greater awareness and safeguarding of the borough's conservation areas. There are also designated maps of important heritage locations for both Wimbledon and Mitcham with other areas to be developed.



### 5.2 Developing services for target groups

Heritage has featured more strongly in local authority service plans and projects. More work has been done to link heritage provision to the school curriculum, including the creation of artefact collections, activity sessions and the release of digitised resources such as local area packs. An annual programme of events for Black History Month, the Celebrating Age and Family Learning Festival has increased intergenerational activity and the celebration of Merton's diverse communities.

### 5.3 Raising the profile of local heritage through joint working

The Heritage and Design Working Group was established to promote information exchange and partnership opportunities across Merton. This has also allowed for more joint review and updating of the Locally Listed Buildings record and greater recognition of the importance of local heritage as part of regeneration planning. The promotion of exhibitions and events staged by Merton Heritage Service and the borough's heritage organisations has increased through regular features in "My Merton," the use of corporate and stakeholder websites and social media. A wide ranging Volunteering Strategy has also increased capacity and participation in heritage activities. We have also strengthened work with National Trust, Historic England and other regional and national bodies and will continue to do so.



### 5.4 Work with stakeholders to safeguard and increase access to local heritage

Development of the first Merton Heritage Strategy provided a framework for support, service development and collaboration. Merton Heritage Centre has staged a wide range of themed exhibitions and has also created a system for hosting displays produced by stakeholder organisations. The local authority continues to support stakeholder initiatives including the proposed transfer of Wandle Industrial Museum to Ravensbury Mill and the development of

Merton Priory Chapter house as a major visitor attraction. Considerable work has also been undertaken to promote external funding opportunities and support stakeholder funding bids. A wide-ranging list of Heritage Lottery funded projects has been developed across Merton. This will bring in up to £8 million of external funding to support local heritage by 2016.

## 6. Issues

A number of issues affect the safeguarding of Merton's heritage and the provision of associated services. These are as follows:

### 6.1: Raising the profile of heritage in the borough

There is a public perception that the borough's heritage and tourism focus is Wimbledon and more needs to be done to generate interest and attract visitors to all parts of the borough. Initiatives such as the Merton Memories digitisation project have enabled heritage organisations, schools and the wider community to work together successfully to share resources, good practice, marketing and outreach opportunities. It is important to keep this impetus going and to increase the range of collaborative work undertaken in order to maximise resources, develop relevant skill sets and promote the borough's heritage attractions and collections effectively.

### 6.2: Funding and investment

Merton's heritage providers face a challenging future, particularly in the current economic climate where future funding may hinder service provision, capital development and investment in conservation or new technology. Service providers need to generate income in order to maintain and develop services but need to consider charges carefully against limiting access to resources.



Capacity constraints not only provide challenges for the local authority but also for heritage organisations in the borough. Increasing external funding and generating sponsorship are key to promoting our heritage. There has been an increase in the number of external grants awarded by funding bodies such as the Heritage Lottery Fund; however the number of funding applications submitted by local museums and community groups is still fairly low and should be increased. More needs to be done to identify and raise awareness of funding streams to encourage new bids.

### **6.3: Public engagement and participation**

Heritage is unsustainable if it is kept for the pleasure of a small minority. Heritage properly shared, enjoyed and exploited is a source of prosperity and growth. We want our heritage, past and present, to be properly identified, made accessible and comprehensible to the widest possible audience.

If Merton's heritage is to be protected and the range of services expanded, provision must be more inclusive. This is important if local heritage attractions and collections are to be relevant and appealing to the wider community and in particular within underrepresented groups such as young people and those from BAME backgrounds.



There is a particular need to broaden public engagement with local heritage whether as service users / visitors, staff (paid and voluntary), through heritage forums, or donors of historic objects / documents. Linked to this is the need to increase the range and opportunities for collaborative work between different heritage providers and community groups in order to maximise resources, share expertise and increase the profile of Merton's heritage.

### **6.4: Safeguarding local heritage**

Merton has a number of properties on the Historic England Buildings at Risk register. In the current economic climate there is a growing threat that important artwork, historic documents, objects and structures may be taken out of the borough; or left to deteriorate due to lack of funding for appropriate conservation work. It is important to have a clear strategy for protecting vulnerable and significant aspects of local heritage, from important documentary collections, to the historic environment and buildings of local interest. We will continue to improve the monitoring and reporting of heritage at risk; opportunities for challenging unsympathetic development; funding streams for conservation / emergency protection and work to maintain the integrity of local conservation areas.

In order to ensure that Merton's heritage providers are meeting standards regarding customer care, equalities and collections management, it is important to ensure ongoing access to professional development opportunities. It is also vital to ensure that local museums and heritage attractions can engage staff and volunteers with appropriate skills to maintain service continuity. Linking with bodies such as the Museums Association, the Arts Council or National Archives and closer regional work will also help to improve access to our resources.

## 7. Objectives: 2015 – 20

### **Objective 1: Raise Merton's profile by increasing public access to the borough's unique and diverse cultural heritage**

#### **To be delivered by:**

- Getting underrepresented groups more involved in heritage projects and championing their own heritage.
- Developing the borough's visitor potential and the investment that this can bring.
- Contributing to the quality of life for residents and the community.
- Promoting Merton's heritage to our residents, visitors and tourists.

### **Objective 2: Safeguard the borough's varied heritage sites and resources, protecting and conserving them for the benefit of future generations**

#### **To be delivered by:**

- Enhancing the borough's public realm.
- Influencing design of new developments so that they enhance our shared heritage.
- Initiating heritage-led regeneration to maintain geographical and historical character.
- Restoring original and sentimental character to heritage assets.
- Developing our collections, museums, sites and landscapes and improve accessibility.

### **Objective 3: Ensure that Merton's heritage provision is inclusive by working collaboratively to widen public engagement and participation**

#### **To be delivered by:**

- A more diverse and stronger network of volunteer led organisations and groups.
- An increase in the number of people volunteering for the benefit of Merton's heritage.
- Strengthening partnership work across the heritage network and beyond.
- Further developing our digital offer.
- Developing use of Merton's heritage as an educational resource.
- Enabling everyone, alone or collectively, to benefit from Merton's cultural heritage, contribute towards its enrichment, and participate in decisions about its future.

### **Objective 4: To recognise the important contribution of social enterprise and secure ongoing funding and investment in Merton's heritage through partnership work, external funding and sponsorship**

#### **To be delivered by:**

- Continuing to increase the level of external funding to support our heritage from a range of sources.
- Pursuing sponsorship opportunities and draw input into ongoing heritage projects from the business community.
- Encouraging the expansion of the tourist economy.
- Working in partnership with local, regional and national organisations and agencies in understanding and caring for Merton's heritage.

## 8. Work Plan

Changes are inevitable in a modern borough, from the size and diversity of the population, to fluctuating prosperity and transformations in our working patterns, leisure habits and needs. A good heritage strategy works with, rather than against change. Through the 2015-20 strategy Merton Council and heritage stakeholders will work collaboratively to make a positive contribution to local heritage. They will strive to maintain important historical sites and resources and where that proves challenging, will ensure that material is properly recorded so it is not lost to future generations.

For the Heritage Strategy to succeed it must involve and integrate the passion of local interest groups, the enthusiasm of present and future volunteers, plus the acumen and risk-taking of the commercial sector. We want Merton to become a major heritage destination for local residents, our London neighbours and visitors from further afield.

The table shown overleaf lists the actions to be undertaken collectively in the borough in order to achieve the objectives in section 7. The work plan will be the key focus of future heritage stakeholder meetings and will track the progress of what is achieved.

Activity	Expected Benefit	Start Date	Completion date	Where will the activity take?	Responsible group / officer
<b>Objective 1: Raise Merton's profile by increasing public access to the borough's unique and diverse cultural heritage.</b>					
To further develop the Merton Memories website by extending the range of content, including different media formats and increasing opportunities for public interaction	<p>Increased public awareness of Merton's heritage and access to historic resources.</p> <p>Greater variety of material available and safeguarded for future generations, including the reminiscences of local people</p>	March 2014	Ongoing	Merton Heritage & Local Studies Centre	London Borough of Merton
To produce a changing programme of exhibitions about different aspects of Merton's heritage and link into major anniversaries and events.	<p>Increased public awareness of Merton's heritage and access to historic resources.</p> <p>Greater range of material available to adult learners and Merton schools.</p> <p>Potential boost to local tourism through increased visits.</p>	September 2014	Ongoing	Merton Heritage & Local Studies Centre	London Borough of Merton
To submit a Heritage Lottery Fund application to conserve and digitise the Grangerised edition of "Brayley's Illustrated History of Surrey."	<p>Unique collection of historic watercolours preserved for posterity and made accessible.</p> <p>Partnership work with historic sites</p>	September 2016	December 2018	Merton Heritage & Local Studies Centre	London Borough of Merton

<b>Activity</b>	<b>Expected Benefit</b>	<b>Start Date</b>	<b>Completion date</b>	<b>Where will the activity take?</b>	<b>Responsible group / officer</b>
To realise the full heritage potential of The Canons and its surroundings, creating a key cultural destination.	Restoration of an important listed building, historic grounds and associated sites for the benefit of future generations.  Creation of a multi-functional facility to host cultural and educational activities.	January 2015	February 2018	The Canons, Madeira Rd. Mitcham	Canons Partnership (London Borough of Merton, Mitcham Cricket Green Community & heritage, Friends of the Canons and Mitcham Society)
Enhance and promote wider access and use of London Road Playing Fields	Enhanced conservation value, increase public engagement	2017	2018	London Road Playing Fields, Mitcham	Mitcham Cricket Green Community & Heritage
Deliver a programme of events and activities to mark Merton's contribution to World War One including the delivery of the Carved in Stone project.	Increased public awareness.	2014	2018	Across Merton	London Borough of Merton (with support from community organisations)
Find a new use for the former Mitcham fire station which advances its role as a community & heritage asset	Secure long term use for otherwise vacant heritage asset	2015	2016	Former Mitcham Fire Station	London Fire Brigade, Mitcham Cricket Green Community & Heritage, London Borough of Merton
Develop a trail for Mitcham Cricket Green	Raised public awareness	2018	Ongoing	Mitcham Cricket Green	Mitcham Cricket Green Community & Heritage, Mitcham Parish Church, Mitcham Methodist Church

<b>Activity</b>	<b>Expected Benefit</b>	<b>Start Date</b>	<b>Completion date</b>	<b>Where will the activity take?</b>	<b>Responsible group / officer</b>
Improve interpretation of the historic assets in Cricket Green	Raised public awareness	2015	2020	Mitcham Cricket Green	Mitcham Cricket Green Community & Heritage
Provide an annual celebration of the heritage of Cricket Green on Civic Day	Raised public awareness	2015	Ongoing	Mitcham Cricket Green	Mitcham Cricket Green Community & Heritage
Introduce an awards scheme for design and heritage in Cricket Green	Improved quality of development and raised public awareness	2017	Ongoing	Mitcham Cricket Green	Mitcham Cricket Green Community & Heritage
Develop Heritage Forum meetings to review the actions included in this strategy and to replace the Heritage & Design Working Group.	Delivery of outcomes included in this Strategy.  Wider participation in the management of our collective heritage.	October 2015	Ongoing	Borough wide	London Borough of Merton and all heritage stakeholders
Develop twinning relationships with Mitcham, Australia.	Raised public awareness.	2016	Ongoing	Mitcham Cricket Green	Mitcham Cricket Green Community & Heritage and Mitcham Cricket Club

Activity	Expected Benefit	Start Date	Completion date	Where will the activity take?	Responsible group / officer
<b>Objective 2: Safeguard the borough's varied heritage sites and resources, protecting and conserving them for the benefit of future generations</b>					
<p>To stabilise and preserve the remains of the Priory, to enhance their setting and to establish an educational and events centre</p> <p>Phase 1: Glazed wall and installation of services</p> <p>Phase 2: Development of interior to create fully equipped museum and community venue.</p>	<p>Safeguarding of a major scheduled ancient monument and associated remains for the benefit of future generations.</p> <p>Creation of a multi-functional facility to host cultural and educational activities.</p> <p>Increased public awareness of Merton's heritage and access to historic resources.</p> <p>Potential benefit to local tourism.</p>	<p>Phase 1: March 2014</p> <p>Phase 2: Dates tbc</p>	<p>Phase 1: Summer 2016</p>	<p>Chapterhouse, Merton Priory and associated sites in Colliers Wood</p> <p>(Merton Abbey Mills environs)</p>	<p>Merton Priory Trust</p>
<p>Repairs to Merton Priory Wall</p>	<p>Repair and interpretation of historic wall on Heritage at Risk Register.</p>	<p>April 2015</p>	<p>April 2016</p>	<p>Merton Priory Wall, Colliers Wood</p>	<p>Merton Priory Trust, London Borough of Merton, National Trust</p>
<p>Transition of the Wheelhouse, Merton Abbey Mills to the control of Wandle Heritage Ltd.</p>	<p>Safeguarding of a major heritage landmark for future generations.</p>	<p>April 2015</p>	<p>April 2016</p>	<p>Merton Abbey Mills, Colliers Wood</p>	<p>Wandle Heritage Ltd</p>
<p>Restoration of Mitcham Clock Tower and relocation to a new plinth</p>	<p>Safeguarding of a major heritage landmark for future generations.</p>	<p>November 2014</p>	<p>October 2015</p>	<p>Mitcham Fair Green</p>	<p>London Borough of Merton</p>
<p>Complete the Borough Character Study.</p>	<p>Identifying the special characteristics of the borough</p>	<p>April 2012</p>	<p>June 2016</p>	<p>Merton Civic Centre</p>	<p>London Borough of Merton</p>

Activity	Expected Benefit	Start Date	Completion date	Where will the activity take?	Responsible group / officer
	on a neighbourhood wide basis.				
Work with local community organisations to review and extend the Local List	Shared recognition of local heritage value.	2016	2017	Borough wide	London Borough of Merton and local community groups
Incorporate the Heritage Strategy 2015 – 2020 as a supporting document for the Local Development Framework	Increased awareness of the role in heritage as part of building development.	2016	Ongoing	Borough wide	London Borough of Merton
Secure and deliver investment in the Canons and its open spaces which increases its heritage value	Enhanced conservation value, increase public engagement & understanding, sound future for listed building.	2015	2020	The Canons, Mitcham	Canons partners (London Borough of Merton, Friends of the Canons, MCGC&H, Mitcham Society)
Transfer of Wandle Industrial Museum to Ravensbury Mill	Locate Wandle Industrial Museum in a purpose built and full refurbished place.  Increase public awareness of the museum.	Ongoing	April 2016	Ravensbury Mill	London Borough of Merton / Wandle Industrial Museum
Conduct feasibility work into exploring the potential of introducing an 'Adopt a Monument' scheme in Merton.	Increased community participation and awareness of important historical monuments.  Improved conservation of historic monuments.	September 2015	April 2016	Borough wide	London Borough of Merton, heritage stake holders and community organisations



Activity	Expected Benefit	Start Date	Completion date	Where will the activity take?	Responsible group / officer
Increase tree cover in Cricket Green and secure recognition for its specimen and commemorative trees	Increased conservation value	2017	2020	Mitcham Cricket Green	Mitcham Cricket Green Community & Heritage, Friends of the Canons and Merton Tree Wardens
Industrial Heritage (Module 3)  Guided walks of the important industrial features, mapping of all the mill sites and industrial buildings along the entire length of the Wandle.	Digital map of the mills and industrial buildings of the River Wandle, stored on the digital archive. Potential for creation of a printed version of mills map for each borough.	Winter 2016	Summer 2017	Merton and Wandle Wide	Living Wandle Landscape Partnership Scheme – Working in partnership with the Wandle Industrial Museum
Publically accessible Digital Archive storing products of the Living Wandle Landscape Partnership Scheme.	Legacy archive for project products such as oral histories, maps (mapped treasures of the Wandle) , films (including MPCH film) and useful learning resources.	In Progress	Summer 2015	Digitally held on the Wandle Valley Regional Park Website	Living Wandle Landscape Partnership Scheme
Raise public awareness of the variety of ornamental planting and flower beds through Cricket Green.	Increased conservation value & raised public awareness.	2017	2020	Mitcham Cricket Green	Mitcham Cricket Green Community & Heritage
<b>Objective 3: Ensure that Merton's heritage provision is inclusive by working collaboratively to widen public engagement and participation</b>					
To stage an annual Heritage Discovery Day	Greater promotion / public awareness of Heritage collections and attractions in	March 2014	Ongoing	Merton Heritage & Local Studies	London Borough of Merton (with support from local heritage stakeholders)

Activity	Expected Benefit	Start Date	Completion date	Where will the activity take?	Responsible group / officer
	<p>Merton. Increased public access to historic resources.</p> <p>Increased opportunities to involve diverse groups with the borough's heritage both as participants and service users</p>			Centre	
To run the "Sharing Space" initiative – providing exhibition space for Merton's heritage stakeholders	<p>Greater promotion / public awareness of the range of Heritage collections and attractions available in Merton.</p> <p>Increased opportunities to involve a range of diverse groups with the borough's heritage both as participants and service users.</p> <p>Effective use of resources to support smaller heritage groups with limited funds.</p>	April 2015	March 2020	Merton Heritage & Local Studies Centre	London Borough of Merton (with support from local heritage stakeholders)
Work in Merton - A walking and oral history project linked to Merton Abbey Mills and focussed on the borough's industrial heritage	<p>Increased public awareness of Merton's heritage and access to historic resources.</p> <p>Increased opportunities to involve a range of diverse groups with the borough's heritage both as participants</p>	October 2014	August 2015	Merton Abbey Mills and various housing estates in the Merton, Mitcham and Colliers Wood	Communities First

Activity	Expected Benefit	Start Date	Completion date	Where will the activity take?	Responsible group / officer
	and service users  Safeguarding important oral history for future generations				
Develop an online Heritage Forum	Improved information sharing and collaboration between stakeholders and the wider community.	April 2015	October 2015	Various	Living Wandle Partnership & Nicholas Hart
Increase participation in Heritage Forum meetings from underrepresented communities.	Improved awareness of our shared heritage.  Increased participation.	September 2015	Ongoing	Various	London Borough of Merton, MVSC, heritage stakeholders
Industrial Heritage (Module 1) Recording the process of changes and improvements at Merton Priory Chapter House.	A wider understanding about the Chapter House, its history and the nature of the improvement works.  Volunteers trained in photography, filming and oral histories. Production of a short film demonstrating the changes made at the Chapter House.	Spring 2015	Autumn 2016	Merton Priory Chapter House	Living Wandle Partnership
Improve connections and collaboration between businesses, schools, faith and other organisations in the celebration and care of Mitcham Cricket Green Conservation Area and its	Increased community engagement.	2015	Ongoing	Mitcham Cricket Green	Mitcham Cricket Green Community & Heritage

Activity	Expected Benefit	Start Date	Completion date	Where will the activity take?	Responsible group / officer
environs.					
Deliver a program of activities and events as part of Merton's 50 <sup>th</sup> anniversary celebrations.	Increased community engagement and involvement.  Promotion of Merton's rich heritage.	March 2015	December 2015	Various	London Borough of Merton (with support from community organisations)
<b>Objective 4: To recognise the important contribution of social enterprise and secure ongoing funding and investment in Merton's heritage through partnership work, external funding and sponsorship</b>					
To submit a Heritage Lottery Fund application to develop Merton Heritage and Local Studies Centre, incorporating new technology to increase access to historic collections.	Service is able to invest in new equipment making collections more accessible and relevant to current and future generations.  Increased public awareness of Merton's heritage and access to historic resources.  Potential to increase service uptake and the range of services available to visitors of all ages.	2016	2018	Merton Heritage & Local Studies Centre	London Borough of Merton
To submit a Heritage Lottery Fund bid to develop a core range of history resource boxes for use by local schools (combining a range of historic objects and high quality replicas appropriate for classroom use).	Greater range of material available to support the history curriculum in Merton schools.  Resources tailored to school requirements	December 2016	December 2017	Merton Heritage & Local Studies Centre	London Borough of Merton

Activity	Expected Benefit	Start Date	Completion date	Where will the activity take?	Responsible group / officer
	Further opportunities for partnership work between Merton Heritage Service and local schools.				
Secure a sustainable future for Mitcham Cricket Club and the tradition of cricket being played on the Green	Maintain globally important heritage asset	2015	2017	Mitcham Cricket Green	Mitcham Cricket Club & Mitcham Cricket Green Community & Heritage
To promote the Heritage Lottery Fund and other heritage related funding streams widely.	Increased awareness of our heritage. Increase funding into heritage infrastructure.	2015	2020	London Borough of Merton	London Borough of Merton, heritage stakeholders, MVSC and Merton Chamber of Commerce
Provide tailored support for community organisations to access heritage funding.	Improve resilience of community organisations. Increase funding into the borough.	2015	2018	London Borough of Merton	London Borough of Merton, MVSC

This page is intentionally left blank